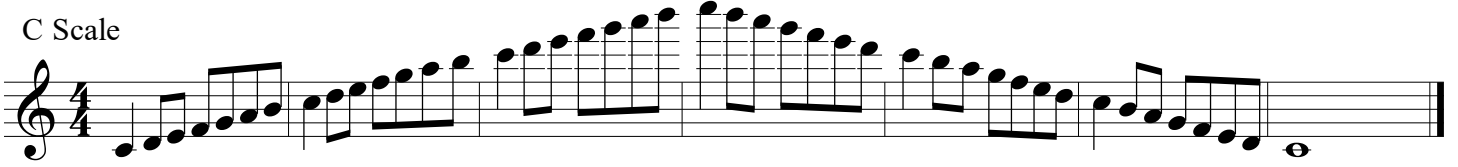
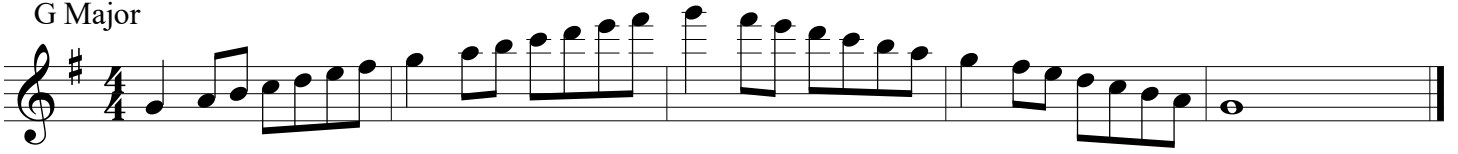


Two and Three Octave Scales

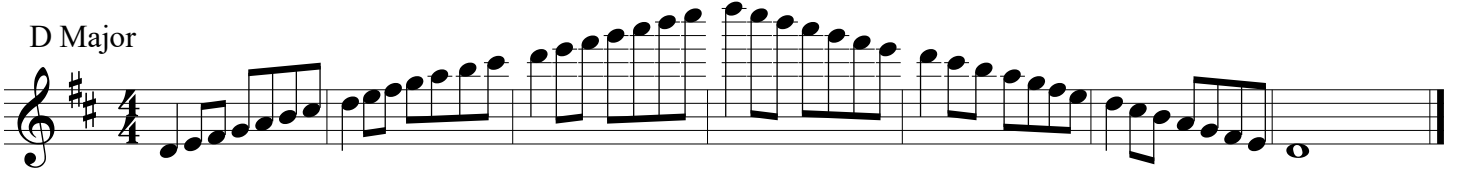
C Scale



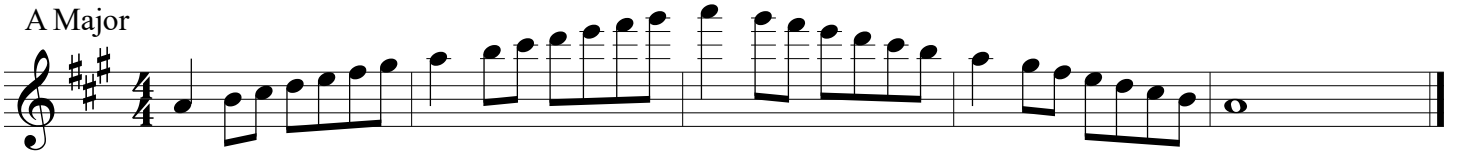
G Major



D Major



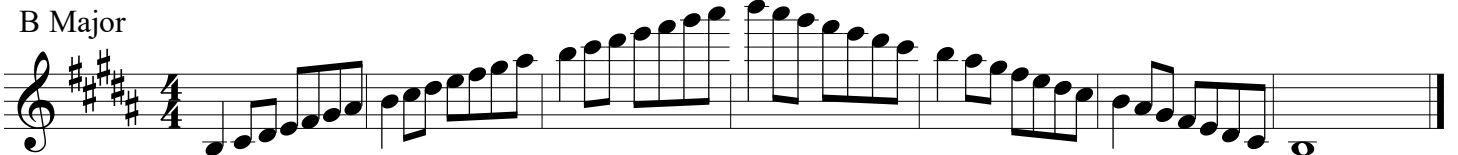
A Major



E Major



B Major



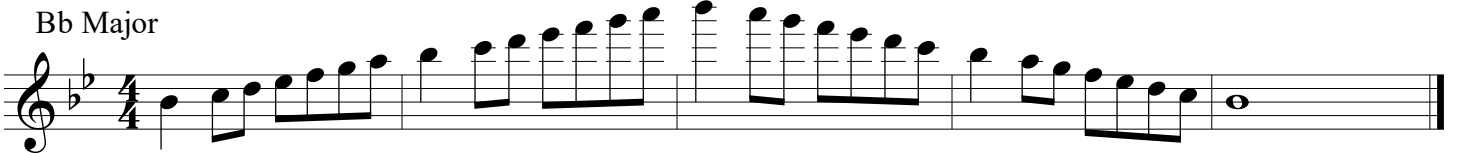
F# Major



F Major



Bb Major



Eb Major



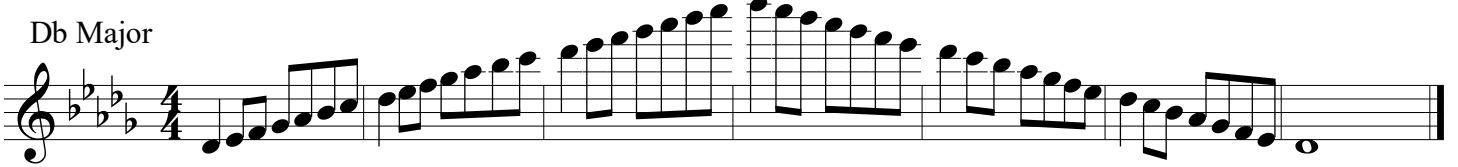
Two Octave Scales

Ab Major



Musical notation for the Ab Major scale in 4/4 time. The scale is written on a single staff, starting with a treble clef and a key signature of three flats (Ab, Bb, Cb). The scale consists of two octaves, ascending and then descending, ending with a whole note on the starting pitch.

Db Major



Musical notation for the Db Major scale in 4/4 time. The scale is written on a single staff, starting with a treble clef and a key signature of four flats (Db, Eb, Fb, Gb). The scale consists of two octaves, ascending and then descending, ending with a whole note on the starting pitch.

Chromatic



Musical notation for the Chromatic scale in 4/4 time. The scale is written on three staves, starting with a treble clef. The scale consists of two octaves, ascending and then descending, with each note beamed together and marked with a '3' above it, indicating a triplet. The scale ends with a whole note on the starting pitch.